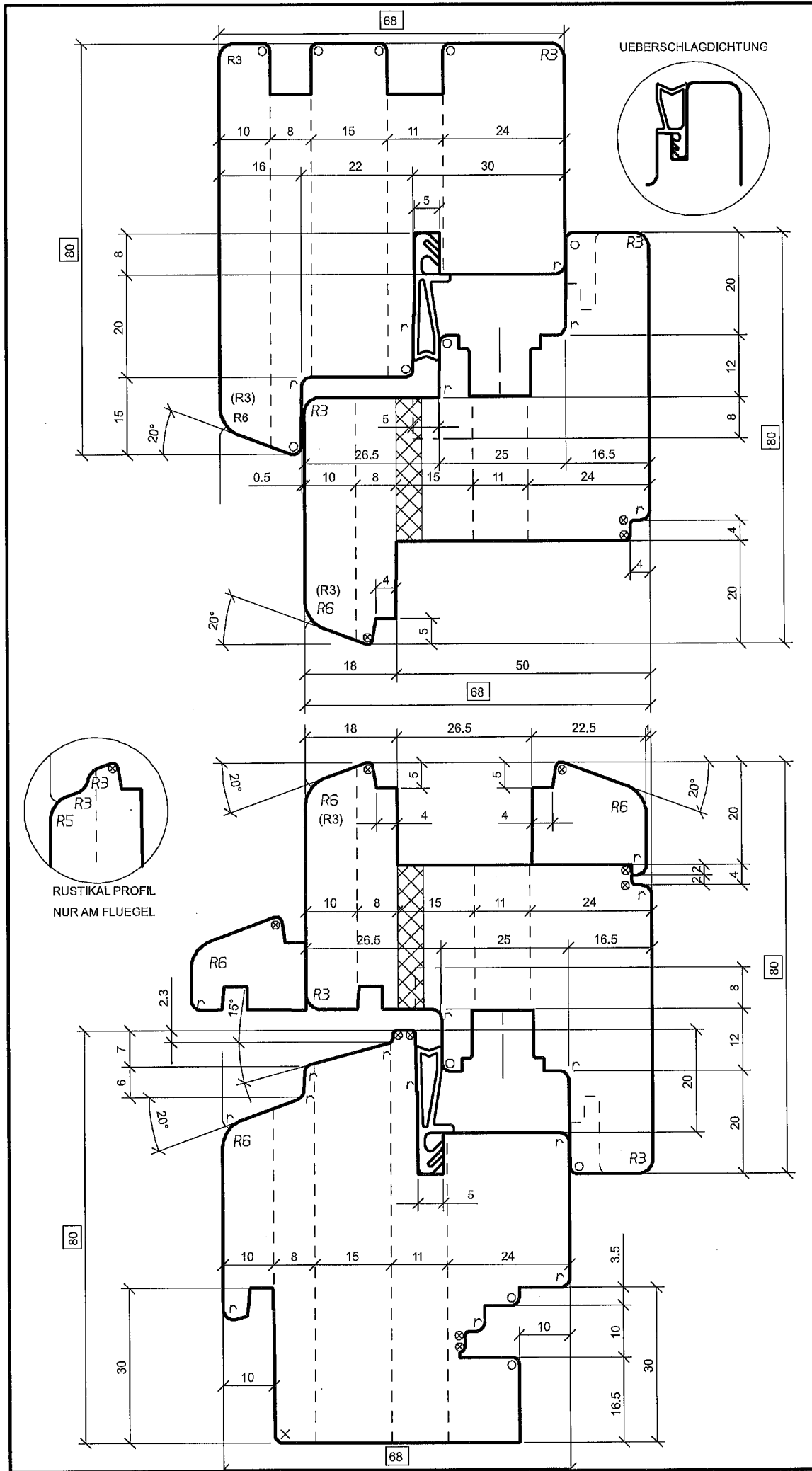


Ers. durch:	Ers. für:	4 0853626 000 A	Maßstab	Gez.	16.01.08	LAR
Aenderungen:	(B) 07.02.08 TSS		1:1	Gepr.	07.02.08	VOF
	RAHMEN UNTEN 1MM FASE		%	ARCHIV		
			<b>4 0853626 000 B</b>			

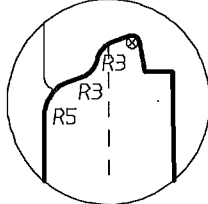
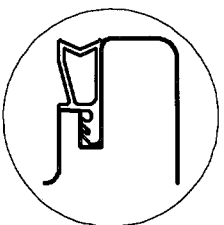
**IV FENSTER 68  
ELEMENTBAU  
REGENSCHIENE: ALTO NOVA**

CAD

- ☒ = Schleifzugabe
- \* = 0.5 mm
- = 0.5x45°
- X = 1 x45°
- = 1.5x45°
- ▽ = 2 x45°
- ⊙ = R 0.5
- ⊗ = R 1
- = R 1.5
- ⋈ = R 2
- R = R 2.5



UEBERSCHLAGDICHTUNG



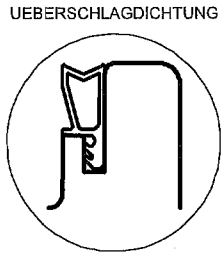
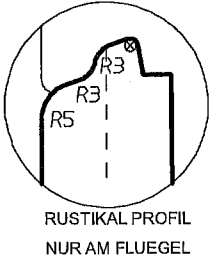
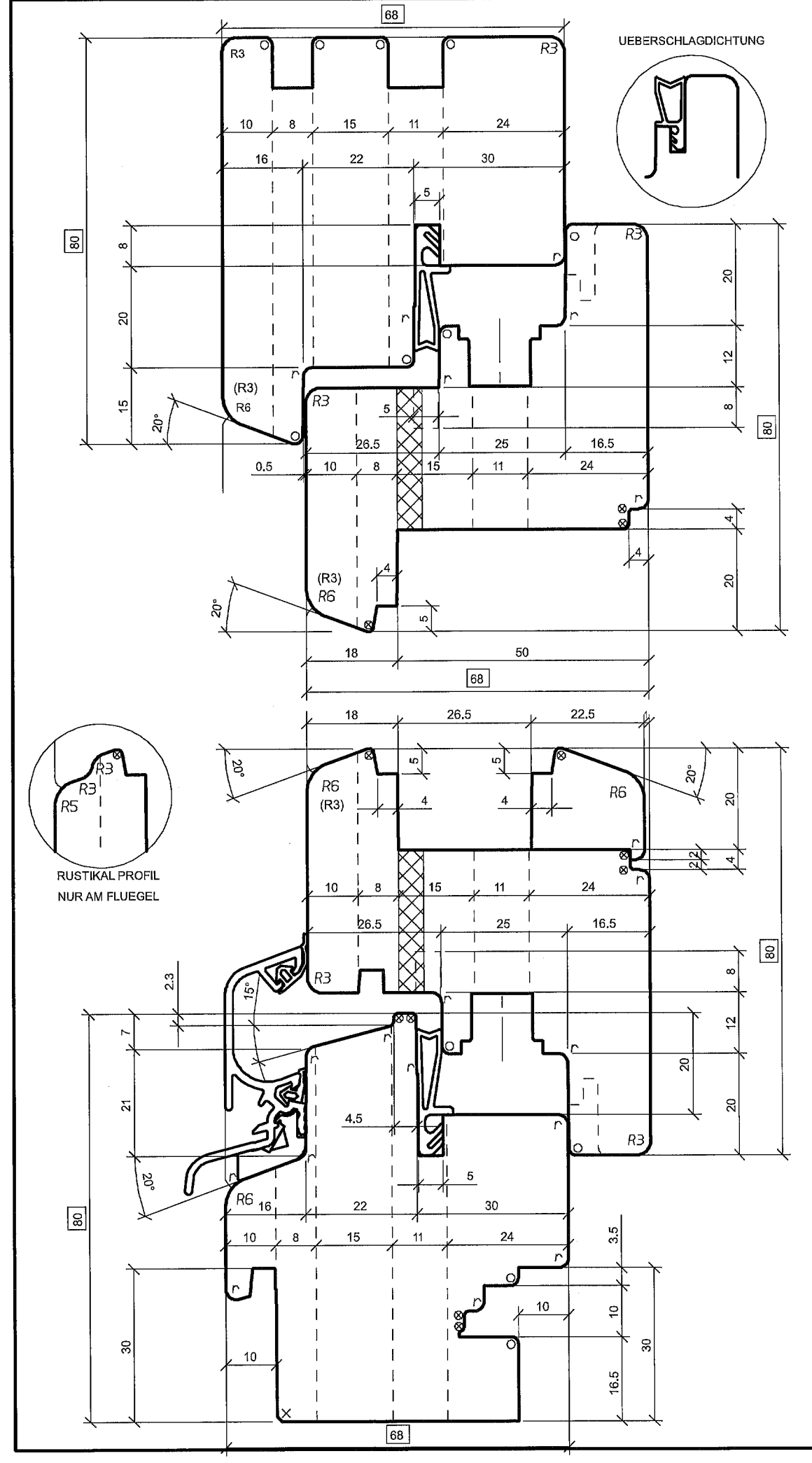
RUSTIKAL PROFIL  
NUR AM FLUEGEL

Maßstab	Gez.	16.01.08	LAR
	Gepr.	07.02.08	VOF
		%	ARCHIV
Ers. durch:	4 0853626 005 A		
Aenderungen:	(B) 07.02.08 TSS RAHMEN UNTEN 1MM FASE		
<b>IV FENSTER 68 OHNE REGENSCHINE MIT RAHMENDICHTUNG</b>			

**4 0853626 005 B**

CAD

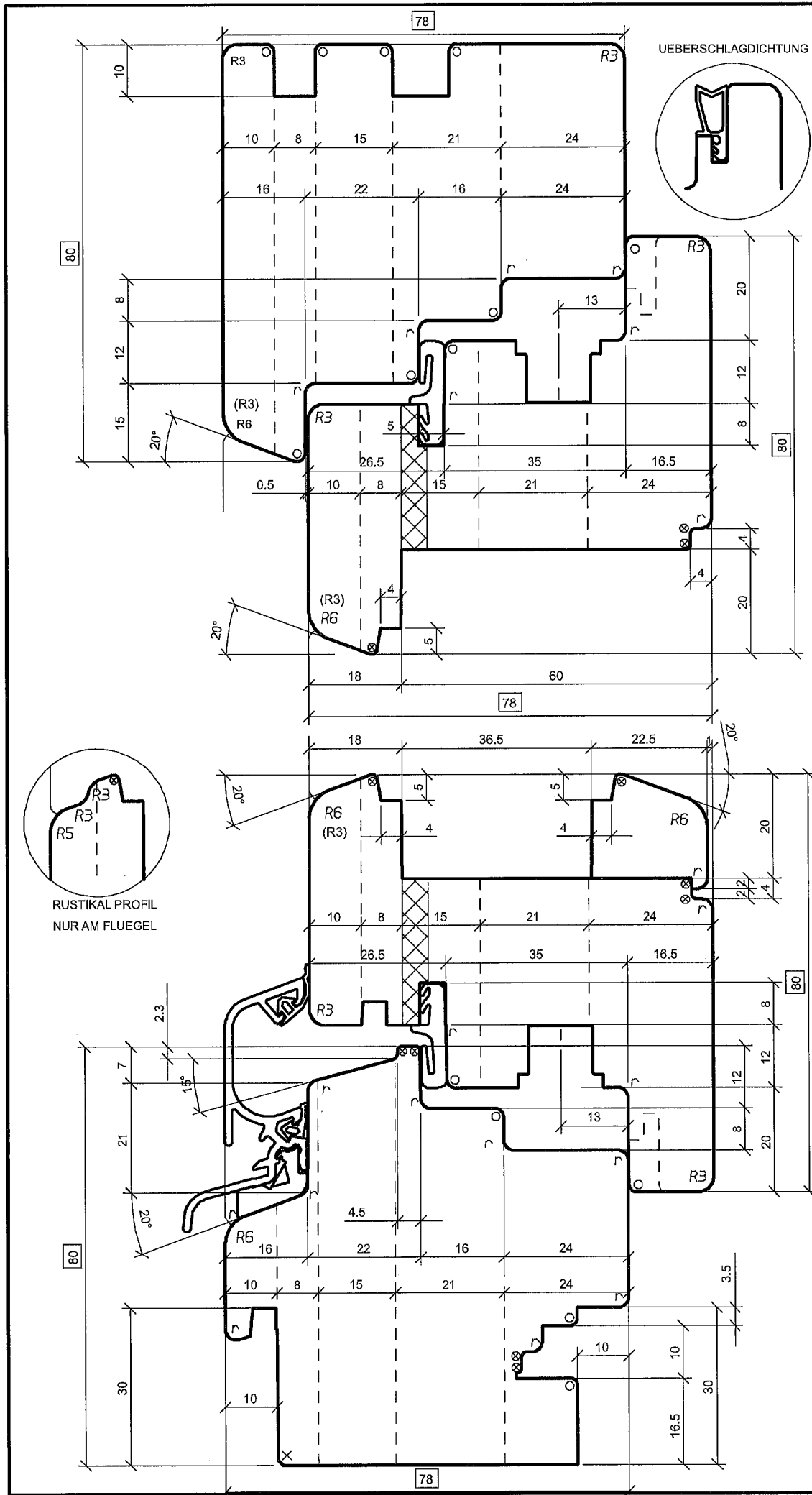
- ⊠ = Schleifzugabe
- \* = 0.5 mm
- ⊙ = 0.5x45°
- ⊗ = 1 x45°
- ⊠ = 1.5x45°
- ▽ = 2 x45°
- ⊙ = R 0.5
- ⊗ = R 1
- = R 1.5
- ⌒ = R 2
- R = R 2.5



Ers. durch:		Ers. für:		4 0853626 006 A	
Aenderungen:		(B) 07.02.08 TSS		RAHMEN UNTEN 1MM FASE	
Maßstab		Gez.		LAR	
1:1		16.01.08		VOF	
%		Gepr.		ARCHIV	
		07.02.08			
<b>IV FENSTER 68</b> <b>MIT RAHMENDICHTUNG</b> <b>REGENSCHINE: ALTO NOVA</b>					
<b>4 0853626 006 B</b>					

- ☒ = Schleifzugabe
- \* = 0.5 mm
- ⊙ = 0.5x45°
- X = 1 x45°
- = 1.5x45°
- ▽ = 2 x45°
- ⊙ = R 0.5
- ⊗ = R 1
- = R 1.5
- ⋈ = R 2
- R = R 2.5

CAD



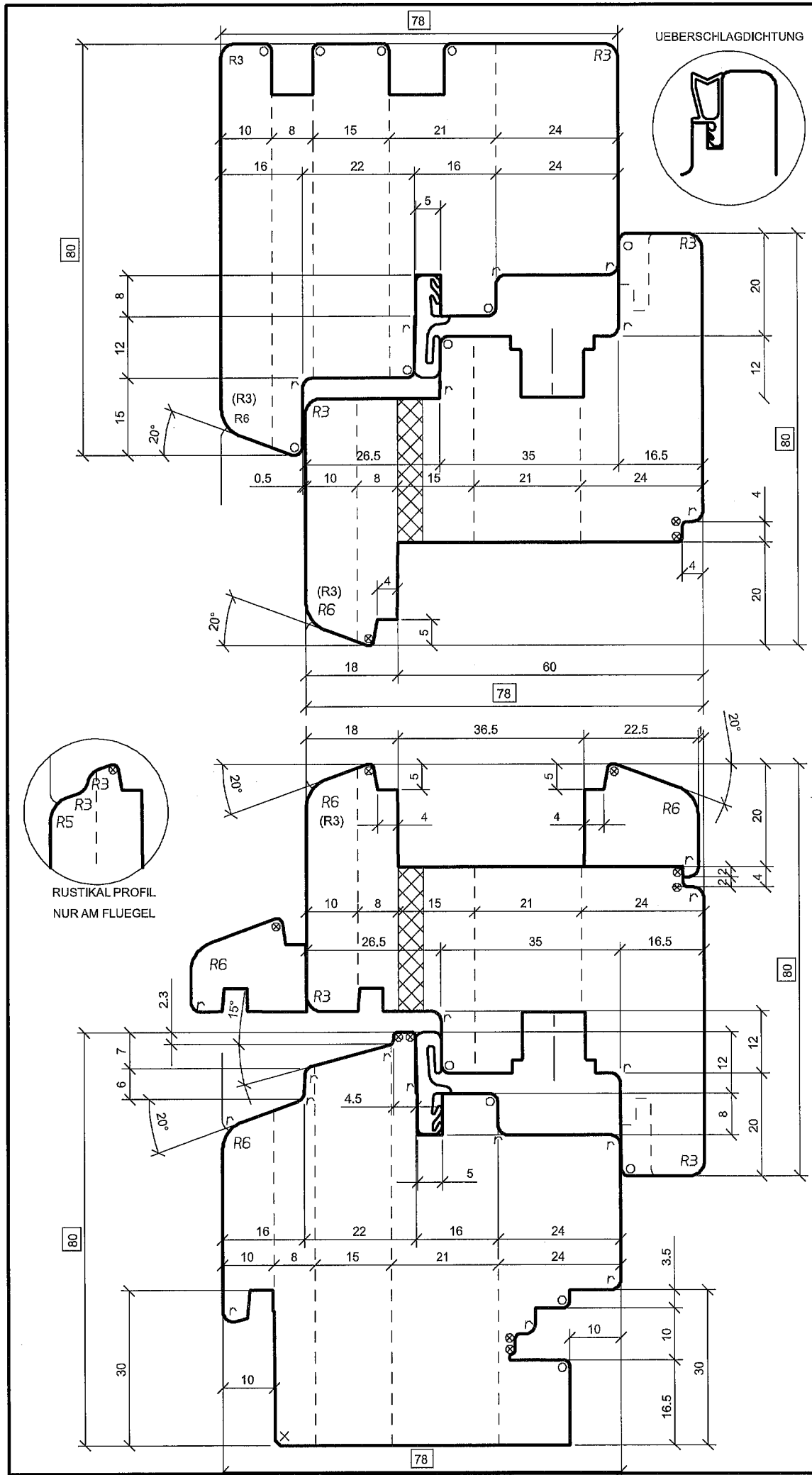
Gez.	16.01.08	LAR	
Gepr.	07.02.08	VOF	
ARCHIV	%		
Maßstab	1:1		

Ers. durch:	4 0853626 020 A
Ers. für:	4 0853626 020 A
Aenderungen:	(B) 07.02.08 TSS RAHMEN UNTEN 1MM FASE
<b>IV FENSTER 78</b> <b>ELEMENTBAU</b> <b>REGENSCHIENE: ALTO NOVA</b>	

CAD

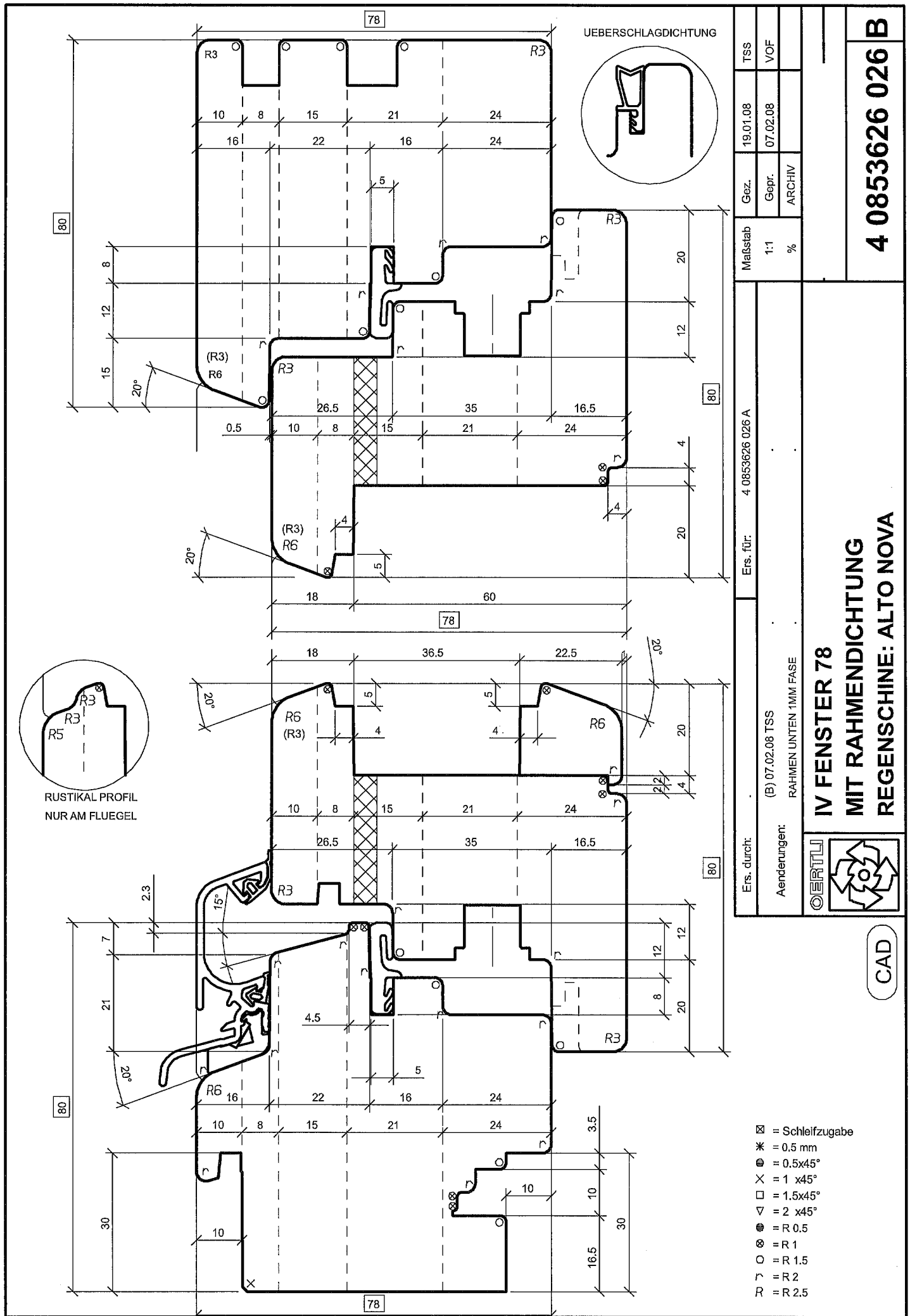
4 0853626 020 B

- ⊠ = Schleifzugabe
- \* = 0.5 mm
- ⊙ = 0.5x45°
- X = 1 x45°
- = 1.5x45°
- ▽ = 2 x45°
- ⊙ = R 0.5
- ⊗ = R 1
- = R 1.5
- ⌒ = R 2
- R = R 2.5



Ers. durch:	Ers. für:		Maßstab	Gez.		TSS
	4 0853626 025 A			1:1	19.01.08	VOF
Aenderungen:			%	Gepr.	ARCHIV	
(B) 07.02.08 TSS						
RAHMEN UNTEN 1MM FASE						
<b>IV FENSTER 78</b>						
<b>OHNE REGENSCHINE</b>						
<b>MIT RAHMENDICHTUNG</b>						
CAD						
						<b>4 0853626 025 B</b>

- ⊠ = Schleifzugabe
- \* = 0.5 mm
- ⊙ = 0.5x45°
- X = 1 x45°
- = 1.5x45°
- ▽ = 2 x45°
- ⊙ = R 0.5
- ⊗ = R 1
- = R 1.5
- ∩ = R 2
- R = R 2.5

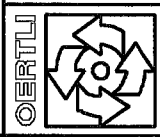


**4 0853626 026 B**

Maßstab	Gez.	TSS
1:1	19.01.08	
%	Gepr.	VOF
	07.02.08	
	ARCHIV	

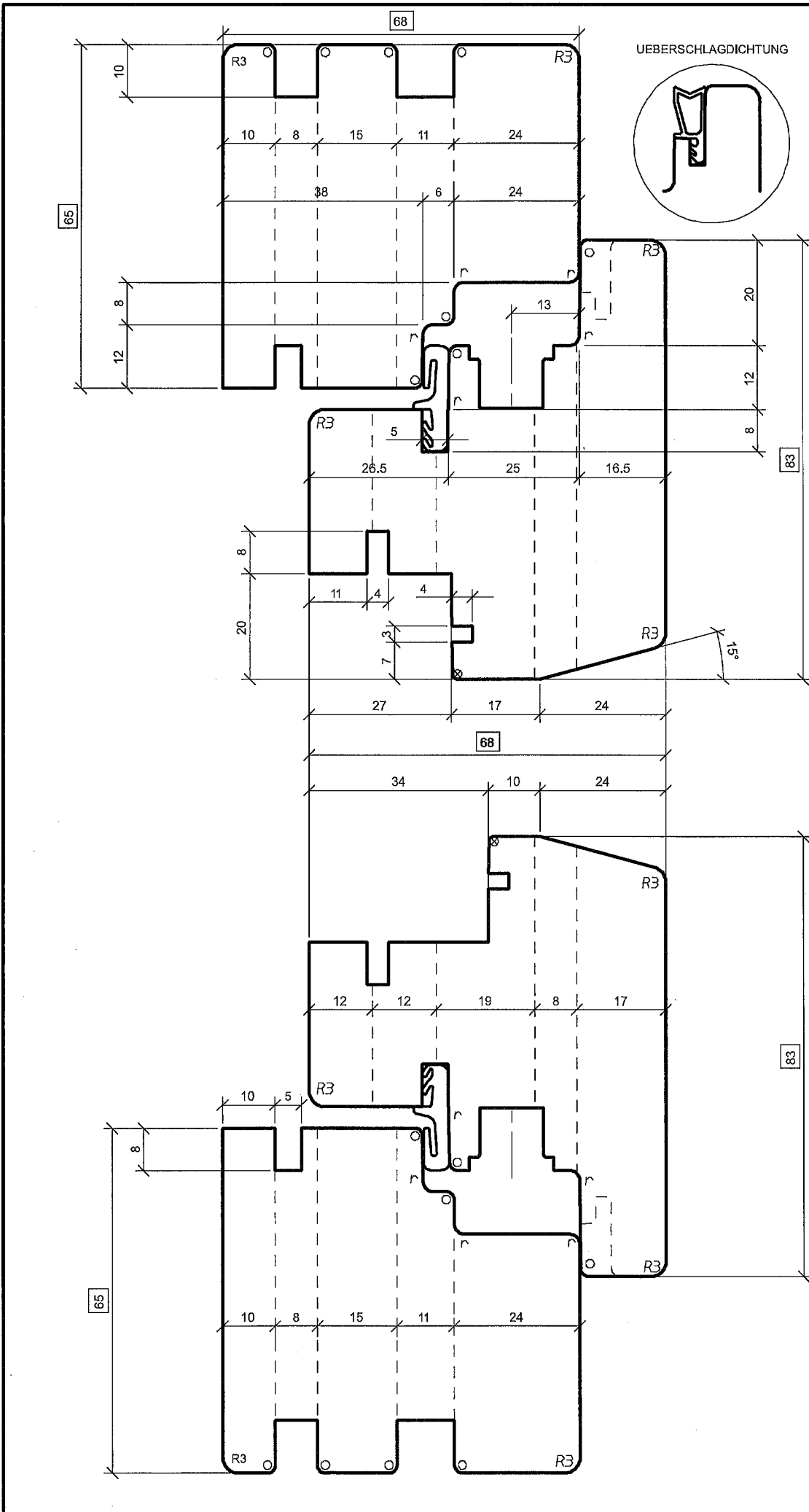
Ers. durch:	Ers. für:
(B) 07.02.08 TSS	4 0853626 026 A
Aenderungen:	
RAHMEN UNTEN 1MM FASE	

**IV FENSTER 78  
MIT RAHMENDICHTUNG  
REGENSCHINE: ALTO NOVA**



CAD

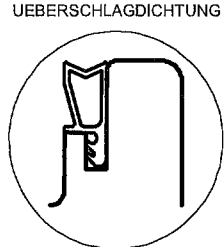
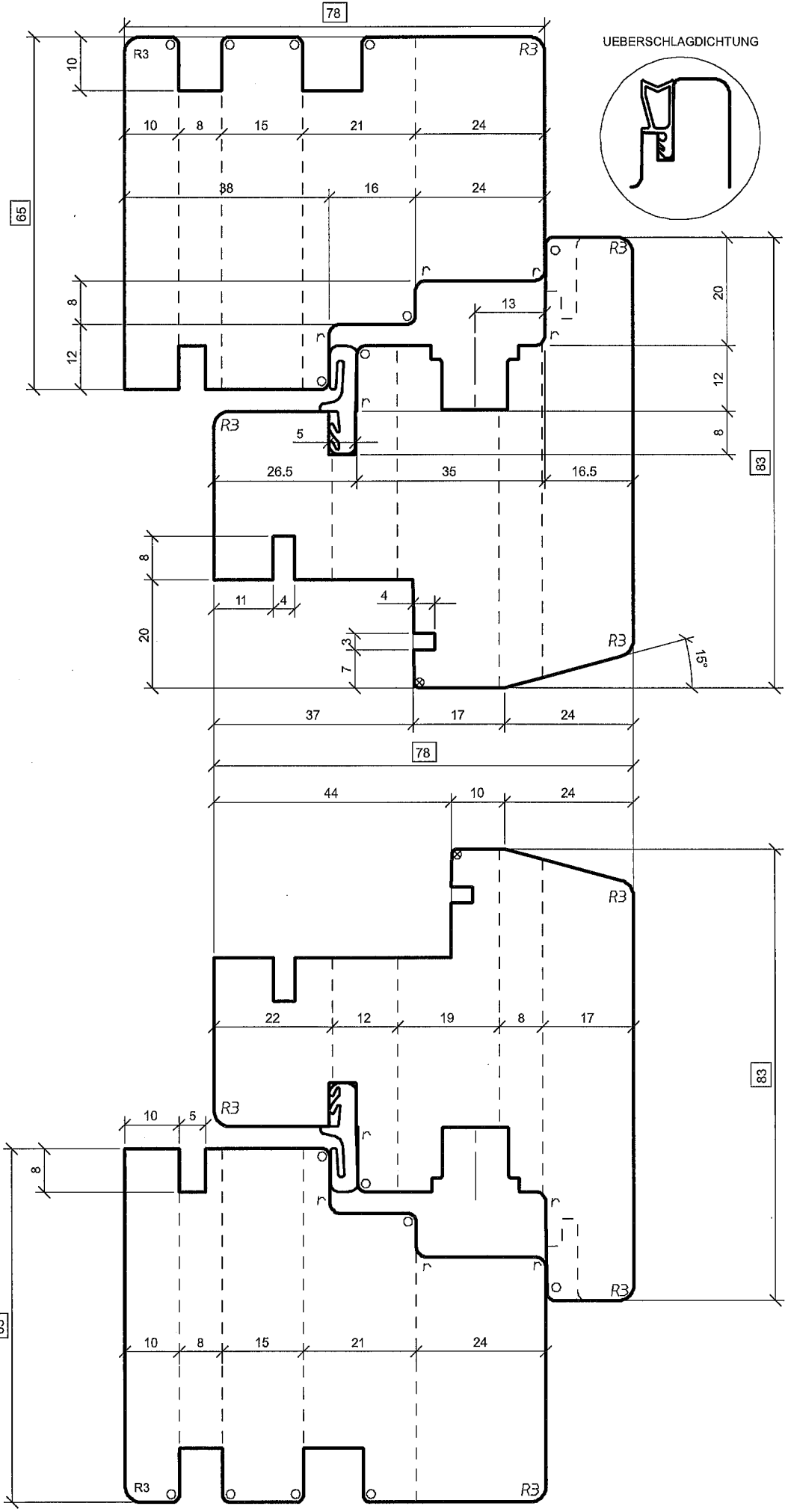
- ⊠ = Schleifzugabe
- \* = 0.5 mm
- ⊙ = 0.5x45°
- X = 1 x45°
- = 1.5x45°
- ▽ = 2 x45°
- = R 0.5
- ⊗ = R 1
- = R 1.5
- ⋈ = R 2
- R = R 2.5



Ers. durch:	Ers. für:	Maßstab	Gez.	TSS			
		1:1	19.01.08				
		%	Gepr.	VOF			
Aenderungen:			ARCHIV				
<b>HOLZ ALU FENSTER 68</b> <b>UNIFORM</b> <b>DOPPELFALZ</b>							
					<b>4 0853626 040 A</b>		

- ☒ = Schleifzugabe
- \* = 0.5 mm
- ⊙ = 0.5x45°
- X = 1 x45°
- ◻ = 1.5x45°
- ▽ = 2 x45°
- ⦶ = R 0.5
- ⦶ = R 1
- = R 1.5
- r = R 2
- R = R 2.5

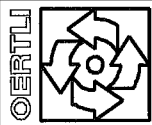
CAD



UEBERSCHLAGDICHTUNG

Ers. durch:	Ers. für:	Maßstab	Gez.	19.01.08	TSS
		1:1	Gepr.	21.01.08	VOF
Aenderungen:		%	ARCHIV		

**HOLZ ALU FENSTER 78  
UNIFORM  
DOPPELFALZ**



CAD

**4 0853626 045 A**

- ☒ = Schleifzugabe
- \* = 0.5 mm
- = 0.5x45°
- X = 1 x45°
- = 1.5x45°
- ▽ = 2 x45°
- ⊙ = R 0.5
- ⊗ = R 1
- = R 1.5
- ∩ = R 2
- R = R 2.5